





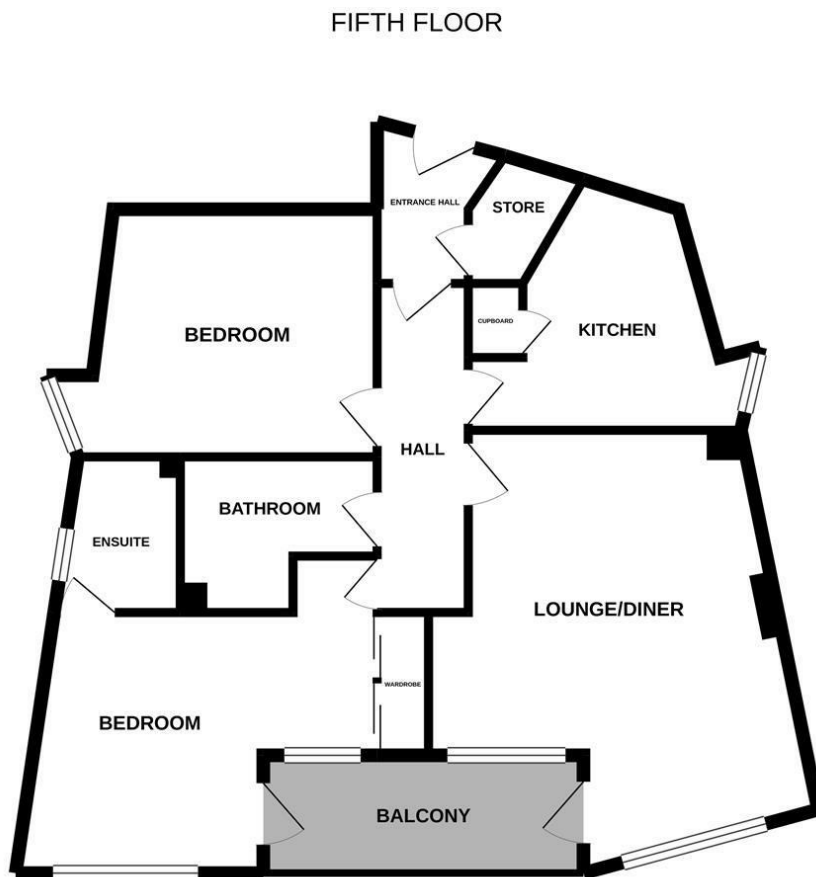
**\*\*AVAILABLE MARCH 2025\*\* \*\*RIVER VIEWS\*\***  
**\*\*FURNISHED\*\* \*\*SECURE ALLOCATED**  
**PARKING\*\*** Originally constructed in 2004, a stylish apartment located on the fifth floor of Baltic Quay on Gateshead Quays. Well presented throughout, boasting a private balcony with scenic Quayside views, spacious bedrooms and off street allocated parking in multi-story car park, this excellent apartment is not to be missed!

With lift access to all floors and secure telephone entry the accommodation briefly comprises: entrance lobby through to entrance hall with built in storage; a spacious lounge/diner with river views and access to the balcony; modern fitted kitchen with tiled flooring and both Smeg & Bosch appliances; two double bedrooms, both similar in size, one of which fully furnished with double bed, storage unit, bedside drawers and a pleasant green out look. The master bedroom without furniture but with a built in wardrobe, ensuite shower room WC and access to the balcony boasting great views over the River Tyne; separate family bathroom WC accessed from the hallway. Externally there is an allocated off street parking space in the multi-story car park. Fully furnished, with double glazed windows and electric heating, perfect for a professional couple or sharers alike.

Available 29th March 2025 | £1,300pcm | Fifth Floor Apartment | Modern Purpose Built Development | Two Double Bedrooms | Allocated Off Street Parking | Secure Telephone Entry | Quayside River Views | Private Balcony | Spacious Lounge/Diner | Modern Fitted Kitchen | Bathroom WC | En Suite Shower Room | Elec Heating & DG | Furnished | Lift Access | Council Tax Band: D | EPC Rating: C

**£1,300 PCM**

**IMPORTANT NOTE:** These particulars and the descriptions and measurements herein do not constitute representation and whilst every effort has been made to ensure accuracy, this cannot be guaranteed.



Whilst every attempt has been made to ensure the accuracy of the floorplan contained here, measurements of doors, windows, rooms and any other items are approximate and no responsibility is taken for any error, omission or mis-statement. This plan is for illustrative purposes only and should be used as such by any prospective purchaser. The services, systems and appliances shown have not been tested and no guarantee as to their operability or efficiency can be given.  
 Made with Metropax ©2021

